

# Aboriginal and Torres Strait Islander Health Practitioners

A snapshot as at 30 June 2020



## At a glance



**791 registered Aboriginal and Torres Strait Islander Health Practitioners in Australia**

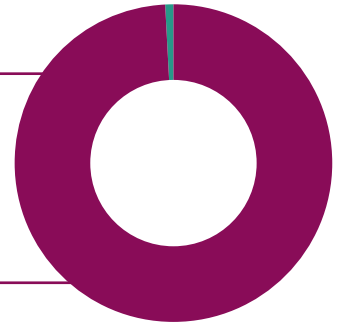
**21 Aboriginal and Torres Strait Islander Health Practitioners on the pandemic sub-register**

**812 Aboriginal and Torres Strait Islander Health Practitioners in total<sup>1</sup>**

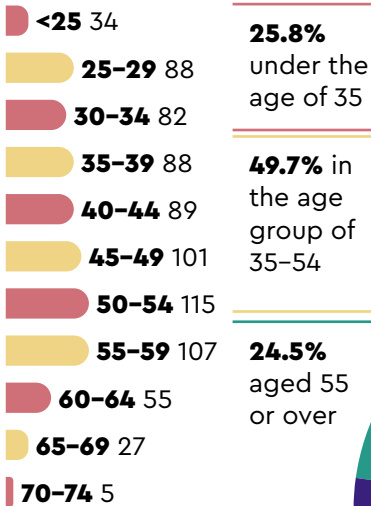
- **0.1%** of the regulated health practitioner workforce
- **3.1** Aboriginal and Torres Strait Islander Health Practitioners per 100,000 head of population<sup>2</sup>

● **99.4% general registration**

● **0.6% non-practising registration**



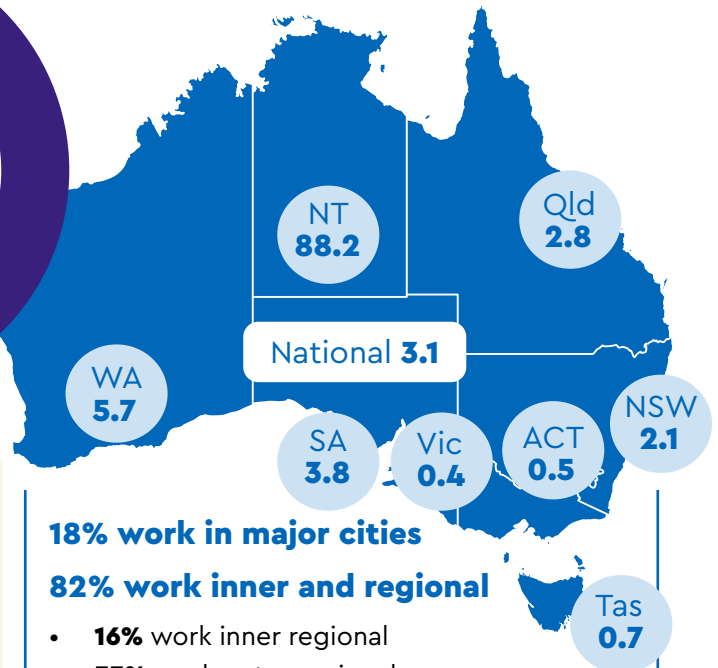
### Age breakdown at 2019/2020



Average age is **44.5 years**

**100% of Aboriginal and Torres Strait Islander Health Practitioners identified as Aboriginal and/or Torres Strait Islander<sup>3</sup>**

**Rate of Aboriginal and Torres Strait Islander Health Practitioners per 100,000 head of population<sup>2</sup>**



**100% have initial qualifications from Australia<sup>3</sup>**

**11.9% work 50 hours or more per week**

**84.4%** work 35 or more hours per week

**15.6% work less than 35 hours per week**

**5.9%** work less than 20 hours per week

**8.2%** of employed Aboriginal and Torres Strait Islander Health Practitioners work no clinical hours<sup>2</sup>

**18% work in major cities**

**82% work inner and regional**

- **16%** work inner regional
- **33%** work outer regional
- **17%** work remote
- **15%** work very remote

<sup>1</sup>The calculations on this page are based on the Aboriginal and Torres Strait Islander health practice profession without the pandemic response sub-register where separating the data is possible.

<sup>2</sup> Excluding non-practising Aboriginal and Torres Strait Islander Health Practitioners.

<sup>3</sup> Source: National Health Workforce Data Set (NHWDS).

# Aboriginal and Torres Strait Islander Health Practitioners

A snapshot as at 30 June 2020



## Trends: 5 years to 2019/20



**34.8% increase in registered Aboriginal and Torres Strait Islander Health Practitioners**

**87.7% increase in student registration**

	2015/16	2019/20	Trend
<b>Registered Aboriginal and Torres Strait Islander Health Practitioners</b>	587	<b>791</b>	↑
<b>Percentage of regulated health practitioner workforce</b>	0.1%	<b>0.1%</b>	→
<b>Percentage of Aboriginal and Torres Strait Islander Health Practitioners in Australia's population</b>	0.002%	<b>0.003%</b>	↑
<b>Percentage of Aboriginal and Torres Strait Islander Health Practitioners under the age of 35</b>	17.5%	<b>25.8%</b>	↑
<b>Percentage of Aboriginal and Torres Strait Islander Health Practitioners aged 35 to 54</b>	58.4%	<b>49.7%</b>	↓
<b>Percentage of Aboriginal and Torres Strait Islander Health Practitioners over the age of 55</b>	24.0%	<b>24.5%</b>	↑
<b>Percentage of male Aboriginal and Torres Strait Islander Health Practitioners</b>	23.0%	<b>22.7%</b>	↓
<b>Percentage of female Aboriginal and Torres Strait Islander Health Practitioners</b>	77.0%	<b>77.3%</b>	↑

### Changes to Aboriginal and Torres Strait Islander Health Practitioner workforce across states and territories

	2015/16	2019/20	% change
<b>ACT</b>	4	<b>2</b>	50.0% ↓
<b>NSW</b>	106	<b>174</b>	64.2% ↑
<b>NT</b>	210	<b>218</b>	3.8% ↑
<b>Qld</b>	103	<b>146</b>	41.7% ↑
<b>SA</b>	52	<b>68</b>	30.8% ↑
<b>Tas</b>	3	<b>4</b>	33.3% ↑
<b>Vic</b>	11	<b>28</b>	154.5% ↑
<b>WA</b>	98	<b>151</b>	54.1% ↑

### Changes to registration categories

- General registration decreased from 99.7% to **99.4% of registrants**
- Non-practising registration increased from 0.3% to **0.6% of registrants**

### Changes to Aboriginal and Torres Strait Islander Health Practitioner workforce across Australia

	2015/16	2019/20	% change
<b>Major cities</b>	75	<b>139</b>	85.3% ↑
<b>Inner regional</b>	67	<b>125</b>	86.8% ↑
<b>Outer regional</b>	216	<b>257</b>	19.0% ↑
<b>Remote</b>	112	<b>130</b>	16.1% ↑
<b>Very remote</b>	95	<b>118</b>	24.2% ↑